


- 
- ✓ THERMALLY EFFICIENT
 - ✓ ENVIRONMENTALLY FRIENDLY
 - ✓ DURABLE AND STURDY
 - ✓ COST EFFECTIVE
 - ✓ EASY INSTALLATION
 - ✓ LONG LASTING
 - ✓ AUSTRALIAN MADE
 - ✓ BCA COMPLIANT

AT THERMOSTRUCT WE SUPPLY THE LARGEST RANGE OF INSULATION MATERIALS AVAILABLE IN AUSTRALIA. WE ARE COMMITTED TO DOING EVERYTHING POSSIBLE TO ENSURE THAT YOUR THERMAL REQUIREMENTS ARE MET AND WITHIN YOUR BUDGET. ALL OF THE INSULATION PRODUCTS WE SUPPLY HAVE BEEN MANUFACTURED AND TESTED TO STANDARDS SET BY THE BUILDING CODES OF AUSTRALIA (BCA) AND THEY ALL CARRY A 100% MANUFACTURER'S GUARANTEE.



PRODUCT DESCRIPTION

InsulSlab is a durable, economical and highly effective insulation panel.

InsulSlab is tailored to provide thermal protection for Australian homes constructed on a concrete slab.

InsulSlab's lightweight composition ensures hassle-free installation, guaranteeing sustained R-value performance throughout the building's lifespan.

InsulSlab delivers unparalleled value and effectiveness, when it comes to Slab on Ground Insulation.



PRODUCT DATA TABLE

Product Overview	Durable and Rigid SL Grade EPS insulation panel
Sheet Size	2400mm X 1200mm
Available Thicknesses	30mm, 40mm, 50mm, 60mm, 70mm 75mm, 80mm, 90mm, 100mm
Density (Kg/m ³)	13.5
Compressive Strength (kPa)	70
Ozone Depleting Substances	Nil
VOC (Volatile Organic Compounds)	Nil
Compliance	AS/NZ 4859.1, ASTM-C518, AS-1366.3, AS-2498.3
Application	Concrete slab on ground *

*Refer to ISOMAX range for slab edge thermal protection

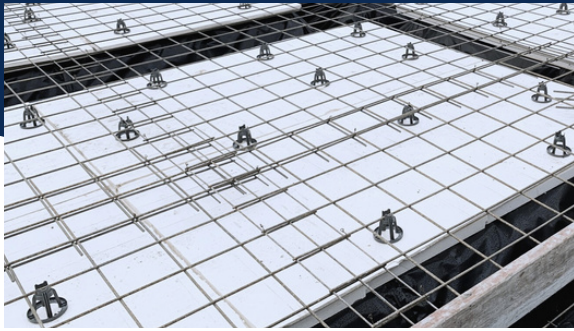
PRODUCT INFORMATION

Thickness	R-Value	Board Weight
30mm	R0.8	1.2 Kg
40mm	R1.0	1.6 Kg
50mm	R1.2	1.9 Kg
60mm	R1.5	2.3 Kg
70mm	R1.7	2.7 Kg
75mm	R1.8	2.9 Kg
80mm	R2.0	3.1 Kg
90mm	R2.2	3.5 Kg
100mm	R2.4*	3.9 Kg

*Higher R-values available on request



SLAB ON GROUND INSULATION



InsulSlab has a compressive strength of 70 kPa, which makes it suitable for slab on ground insulation. **InsulSlab** will serve as a thermal barrier between the ground (earth) and the inside of a building, restricting the transfer of heat in summer and cold in winter.

INSTALLATION INSTRUCTIONS

- Lay **InsulSlab** insulation panels on top of the water proof membrane to cover pad areas
- Cut to size using a knife or saw to suit pad surfaces
- Butt **InsulSlab** panels together and tape joins
- Cut or drill holes to suit any penetrations and seal using a suitable sealant
- Place rebar chairs and mesh on top of the **InsulSlab** panels before pouring concrete

Note: Insulslab is recommended for distributed loads only. For slab edge and beams, refer to ISOMAX XPS range.

HANDLING AND STORAGE

- Keep undercover for any long term storage
- Should be stored flat
- Secure panels down during high winds
- Limit exposure to direct sunlight to prevent possible surface damage
- Avoid contact with volatile solvents and open flames

